

Register Now 
www.delonghi.com/register

XLM21LE



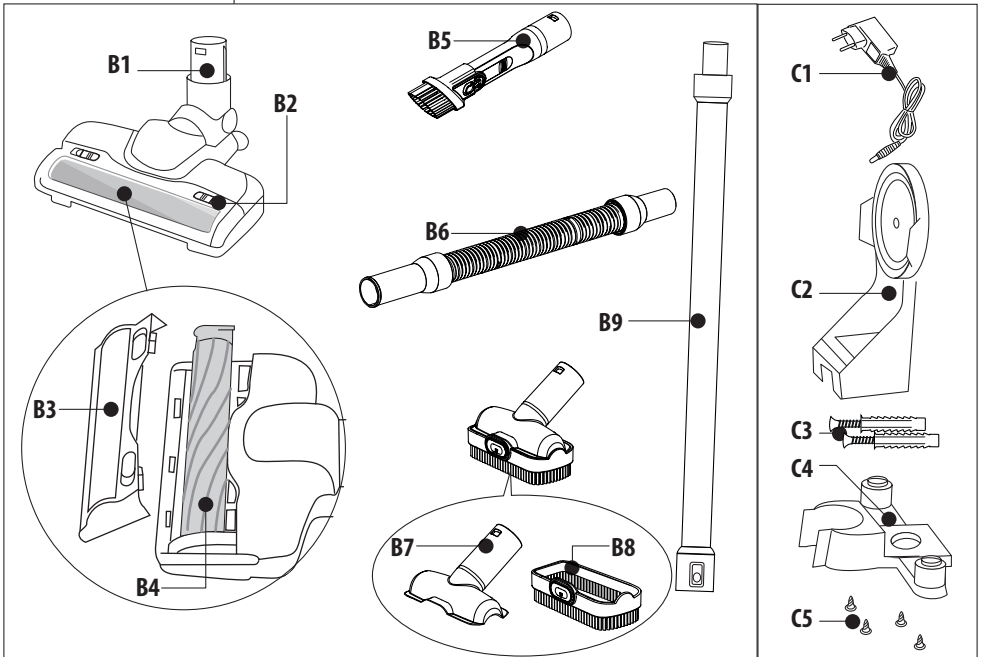
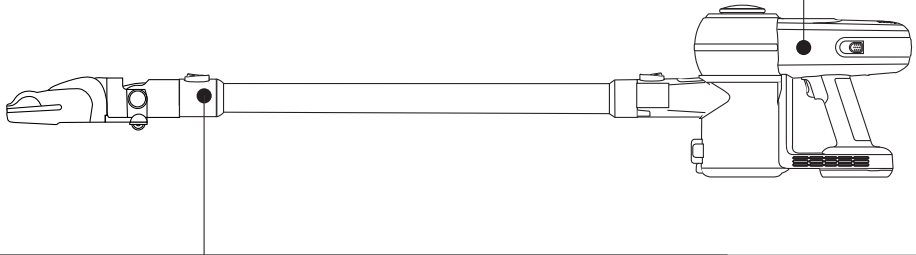
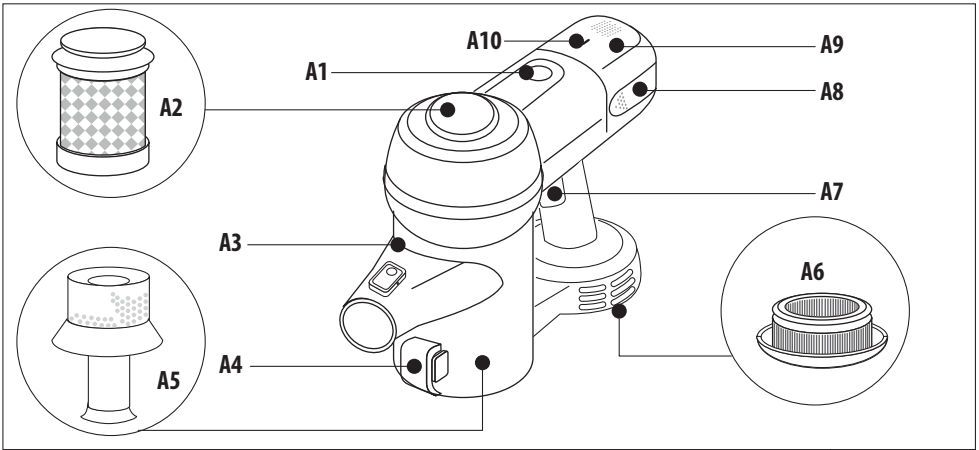
**SCOPA RICARICABILE
MULTIFUNZIONE**
Istruzioni per l'uso

**MULTIFUNCTION
RECHARGEABLE STICK
CLEANER**
Instruction for Use

**BALAI RECHARGEABLE
MULTIFONCTION**
Mode d'emploi

**ASPIRADOR ESCOBA
RECARGABLE
MULTIFUNCIÓN**
Instrucciones para el uso

DeLonghi



IT - DESCRIZIONE

1.1 Descrizione dell'apparecchio

- A1. Tasto selezione/deselezione potenza MAX
- A2. Filtro
- A3. Tanica raccogli-polvere da 0,5l
- A4. Dispositivo apertura coperchio per svuotamento
- A5. Filtro
- A6. Filtro EPA
- A7. Tasto ON/OFF
- A8. Pulsante di sgancio batteria ricaricabile
- A9. Batteria ricaricabile
- A10. Led indicatore di carica e funzionamento:
 - Spento: apparecchio spento
 - Acceso luce verde: apparecchio acceso e batteria carica
 - Lampeggiante luce verde: apparecchio acceso e batteria ormai scarica
 - Acceso luce arancione: caricabatterie collegato e apparecchio in carica
 - Acceso luce verde: caricabatterie collegato e carica completa

1.2 Descrizione degli accessori

- B1. Spazzola motorizzata per pavimenti duri e tappeti a pelo corto
- B2. Pulsante di sgancio
- B3. Visore rullo con setole
- B4. Rullo con setole
- B5. Accessorio 2 in 1: bocchetta a lancia e spazzola per mobili
- B6. Tubo flessibile (*solo alcuni modelli)
- B7. Mini spazzola (*solo alcuni modelli)
- B8. Inserto setole per mini spazzola (*solo alcuni modelli)
- B9. Tubo aspirazione

1.3 Descrizione supporto a muro

- C1. Caricabatterie
- C2. Supporto a muro
- C3. Tasselli per supporto a muro
- C4. Base supporto portaccessori
- C5. Viti per fissare base al supporto

Prima di utilizzare l'apparecchio leggere sempre il fascicolo delle avvertenze di sicurezza.

EN - DESCRIPTION

1.1 Description of the appliance

- A1. MAX power selection/deselection button
- A2. Filter
- A3. 0.5 L dust container
- A4. Cover opening device for emptying
- A5. Filter
- A6. EPA filter
- A7. ON/OFF button
- A8. Rechargeable battery release button
- A9. Rechargeable battery
- A10. Charge and ON LED:
 - Off: appliance off
 - On green: appliance on and battery charged
 - Flashing green: appliance on and battery nearly flat
 - On orange: battery charger connected and appliance charging
 - On green: battery charger connected and appliance fully charged

1.2 Description of the accessories

- B1. Motorised brush for hard floors and short-pile carpet
- B2. Release button
- B3. Roller with bristles viewing window
- B4. Roller with bristles
- B5. 2-in-1 tool: crevice tool and furniture brush
- B6. Flexible hose (*certain models only)
- B7. Mini brush (*certain models only)
- B8. Brush insert for mini brush (*certain models only)
- B9. Suction hose

1.3 Description of wall mount

- C1. Battery charger
- C2. Wall mount
- C3. Anchors for wall mount
- C4. Tool holder base
- C5. Screws for fixing the base to the mount

Before using the appliance, always read the safety warnings.



page 5

FR - DESCRIPTION

1.1 Description de l'appareil

- A1. Touche de sélection/désélection puissance MAX
- A2. Filtre
- A3. Bidon de 0,5 l pour collecter la poussière
- A4. Dispositif d'ouverture du couvercle pour le vidage
- A5. Filtre
- A6. Filtre EPA
- A7. Touche ON/OFF
- A8. Bouton de décrochage de la batterie rechargeable
- A9. Batterie rechargeable
- A10. Témoin de charge et de fonctionnement :
 - Éteint : appareil éteint
 - Allumé vert : appareil allumé et batterie chargée
 - Clignotant vert : appareil allumé et batterie déchargée
 - Allumé orange : chargeur de batterie raccordé et appareil en recharge
 - Allumé vert : chargeur de batterie raccordé et recharge terminée

1.2 Description des accessoires

- B1. Brosses motorisée pour sols durs et tapis poil ras
- B2. Bouton de décrochage
- B3. Écran rouleau-brosse
- B4. Rouleau-brosse
- B5. Accessoire 2 en 1 : suceur à lance et brosse pour meubles
- B6. Tuyau flexible (*sur certains modèles uniquement)
- B7. Mini brosse (*sur certains modèles uniquement)
- B8. Insert brosse pour mini brosse (*sur certains modèles uniquement)
- B9. Tube aspiration

1.3 Description support mural

- C1. Chargeur de batterie
- C2. Support mural
- C3. Chevilles pour support mural
- C4. Base support porte-accessoires
- C5. Vis pour fixer la base au support

Avant d'utiliser l'appareil, toujours lire le feuillet des consignes de sécurité.

ES - DESCRIPCION

1.1 Descripción del aparato

- A1. Botón selección/deselección potencia MÁX.
- A2. Filtro
- A3. Depósito de polvo de 0,5 l
- A4. Dispositivo de apertura de la tapa para el vaciado
- A5. Filtro
- A6. Filtro EPA
- A7. Botón ON/OFF
- A8. Botón de desenganche batería recargable
- A9. Batería recargable
- A10. LED indicador de carga y funcionamiento:
 - Apagado: aparato apagado
 - Encendido luz verde: aparato encendido y batería cargada
 - Intermitente luz verde: aparato encendido y batería casi descargada
 - Encendido luz naranja: cargador de batería conectado y aparato cargándose
 - Encendido luz verde: cargador de batería conectado y carga completa

1.2 Descripción de los accesorios

- B1. Cepillo motorizado para suelos duros y alfombras de pelo corto
- B2. Botón de desenganche
- B3. Tapa transparente rodillo de cerdas
- B4. Rodillo de cerdas
- B5. Accesorio 2 en 1: boquilla lanza y cepillo para muebles
- B6. Tubo flexible (*solo algunos modelos)
- B7. Mini cepillo (*solo algunos modelos)
- B8. Accesorio cerdas para mini cepillo (*solo algunos modelos)
- B9. Tubo aspiración

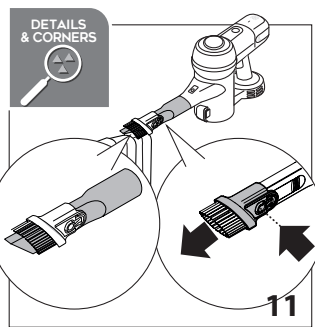
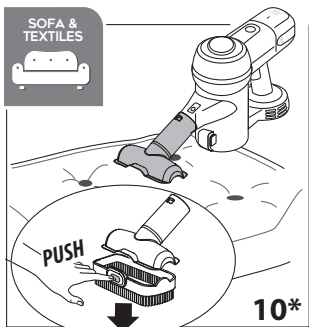
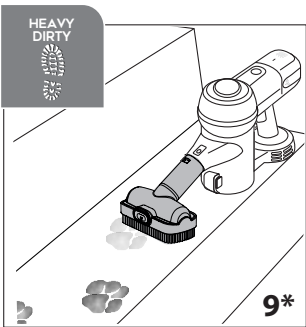
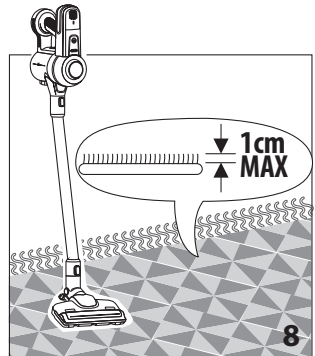
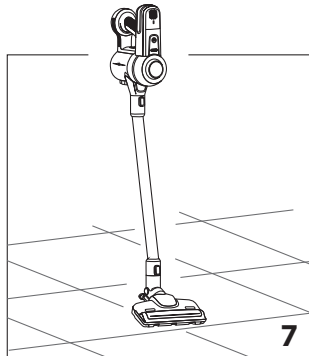
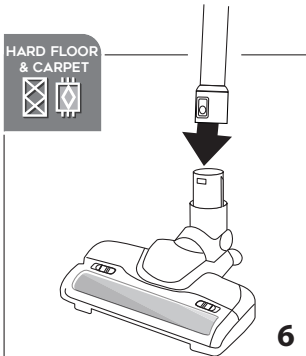
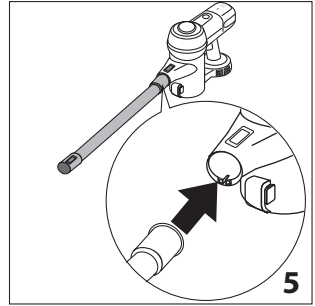
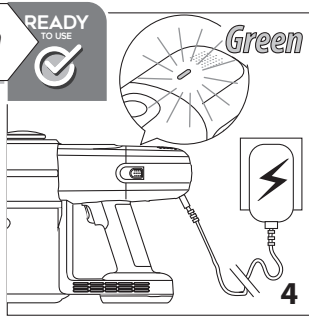
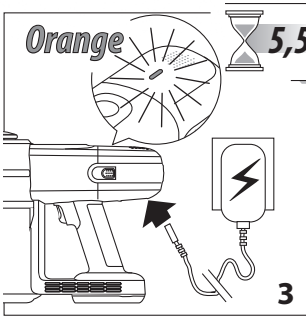
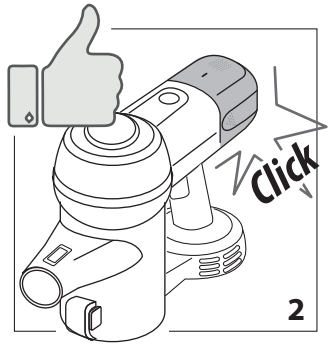
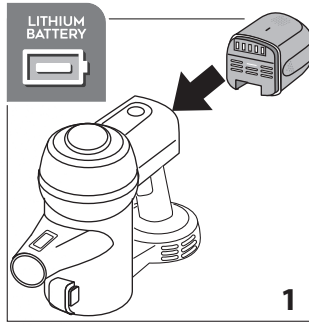
1.3 Descripción del soporte de pared

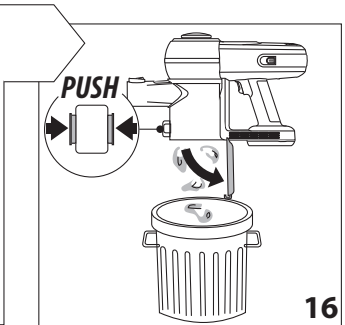
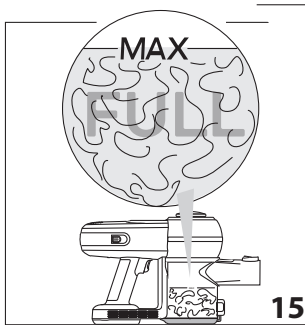
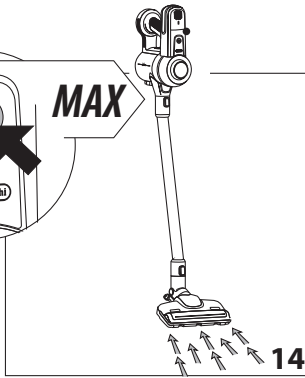
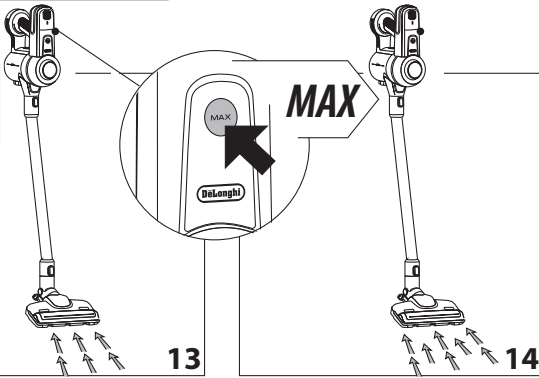
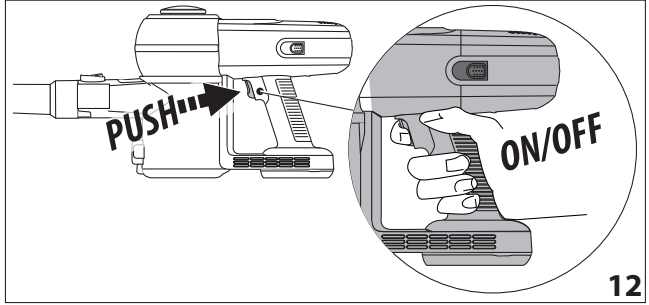
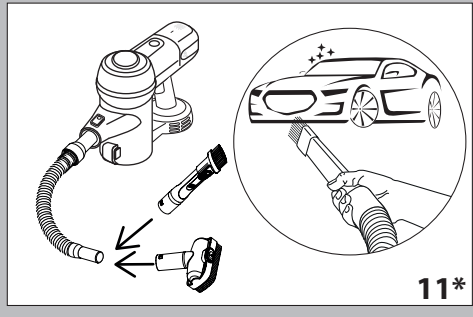
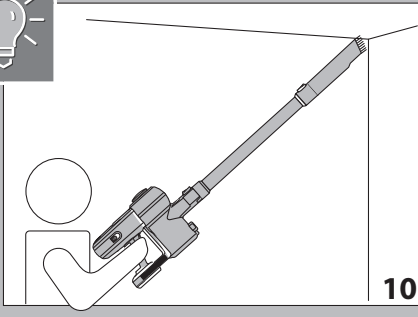
- C1. Cargador de batería
- C2. Soporte de pared
- C3. Tacos para soporte de pared
- C4. Base soporte para accesorios
- C5. Tornillos para fijar la base al soporte

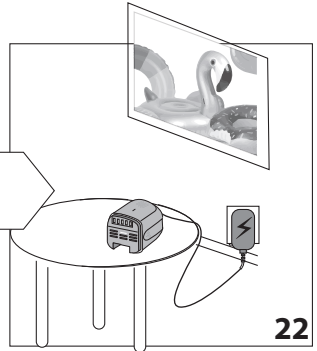
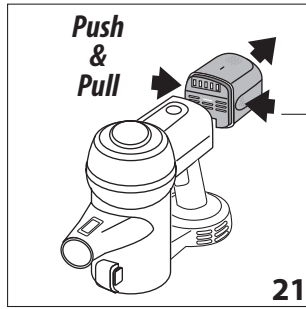
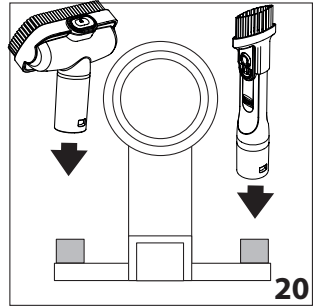
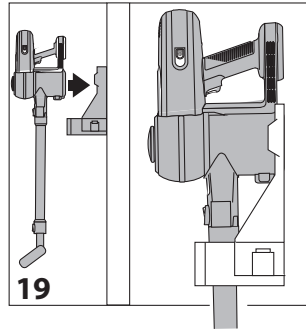
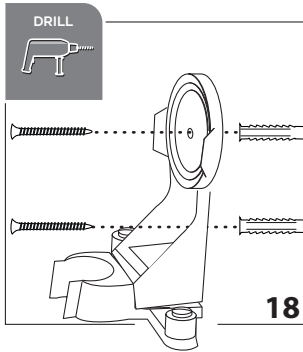
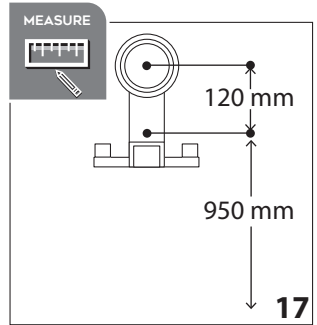
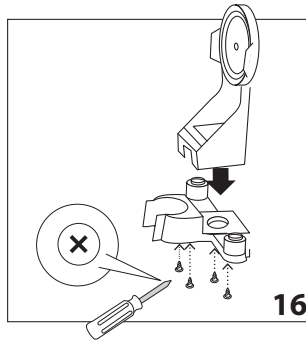
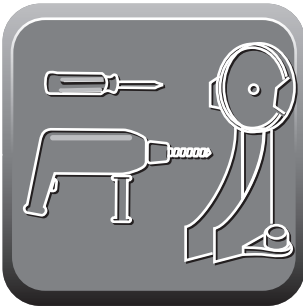
Antes de utilizar el aparato, lea siempre las advertencias de seguridad.



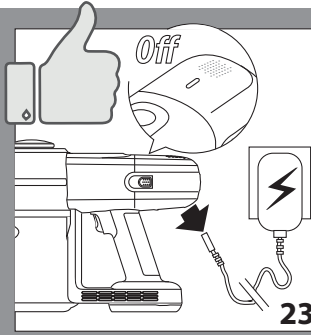
page 5



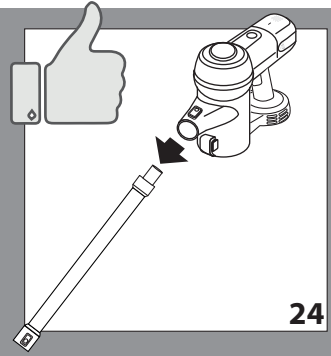




CLEANING



23



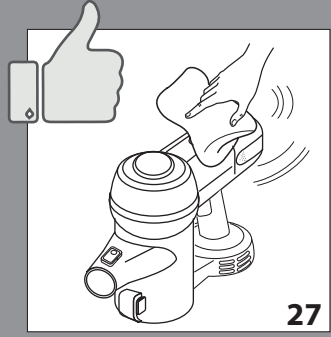
24



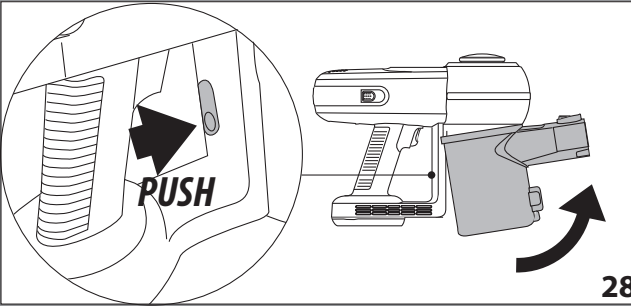
25



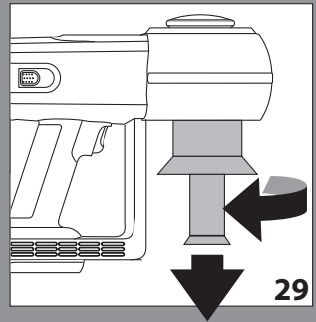
26



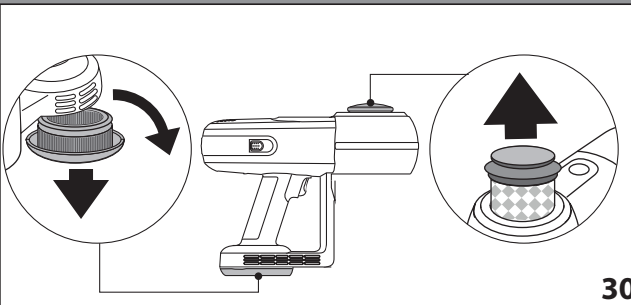
27



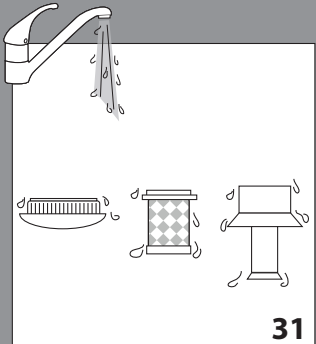
28



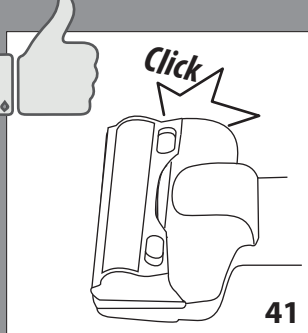
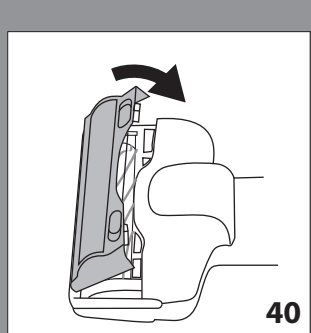
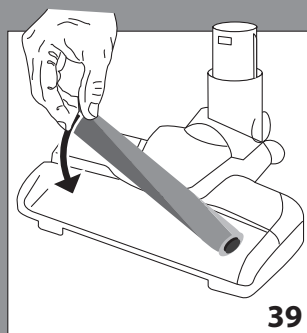
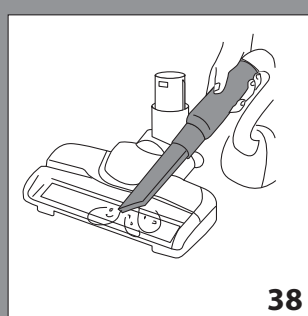
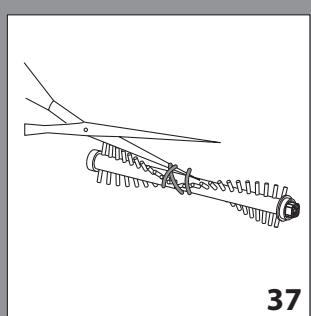
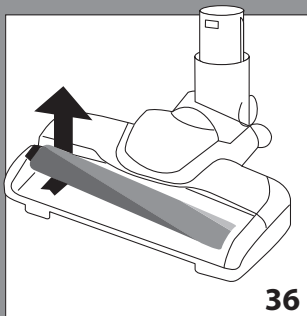
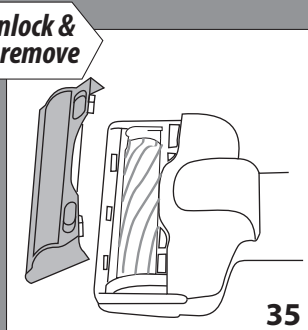
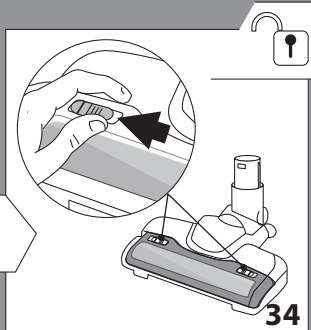
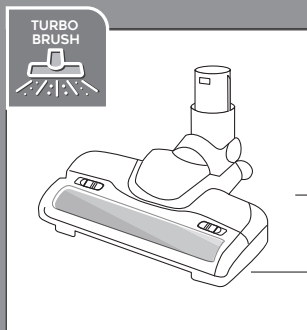
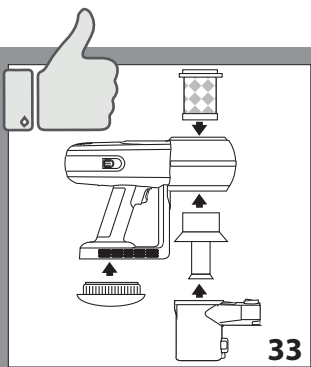
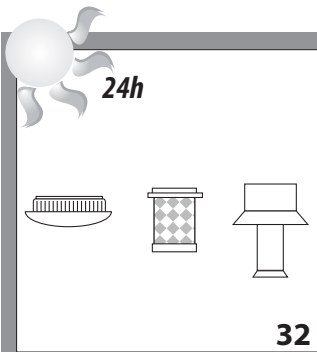
29



30



31



⚠	?	✓
